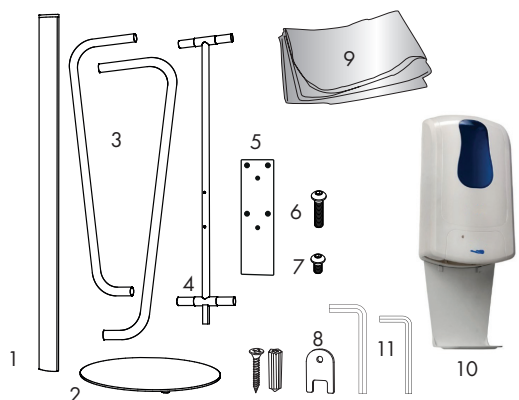


# Eurofit Sani-Station Pedestal

## Product Parts

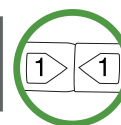
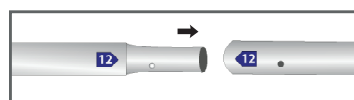
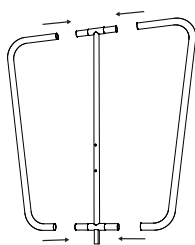
1. Post
2. Base
3. Side Pole (x2)
4. Center Pole
5. Backer Plate (x2 if Double Sided Kit)
6. M6x1.0 Screw (x2)
7. M5x0.8 Screw (x2)
8. Key
9. Graphic
10. Touch-Free Sanitizer
11. #3 & #4 Hex Wrench
12. Mounting Hardware (x4 ea)  
(Not for mounting to Display)



## Display Set-Up

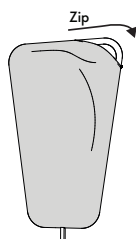
### Step 1

Assemble Side Poles (3) to Center Pole (4) by connecting the corresponding numbers together while pressing the snap button as shown.



### Step 2

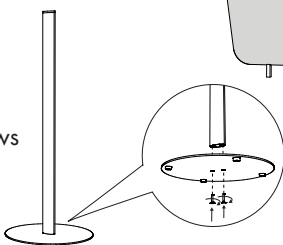
Pull Graphic (9) up over assembled Poles and zip closed at top.



**DO NOT USE** homemade formulas of sanitizer. For further guidance on sanitizer solutions go to <https://www.fda.gov/media/136289/download> the FDA's guidance on sanitizer products.

### Step 3

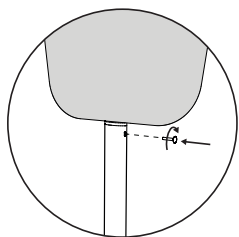
Attach Post (1) to Base (2) using the two M6x1.0 Screws and securing in place with #4 Hex Wrench (11).



### Step 4

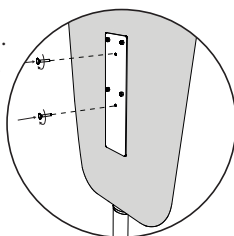
Loosen set screw found near top of Post (1) to allow assembled top to freely be inserted into square opening. Retighten set screw to hold assembled top in place\*.

**\*Grasp assembled display by Post (1) when moving.**



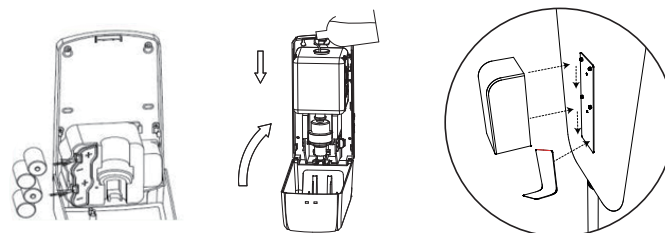
### Step 5

Align holes in Backer Plate (5) with holes through Graphic (9) and mount Backer Plate (5) to assembled display using the two M5x0.8 Screws (7). Tighten with #3 Hex Wrench (11). Mount Touch-Free Sanitizer (10) to pins on Backer Plate (5). Repeat this step for a Double Sided Kit. Backer Plate (5) is mounted on outside of graphic.



### Optional

Touch-Free Sanitizer comes with Optional Mounting Hardware (10) to allow user to hang elsewhere.



## Touch-Free Sanitizer Set-Up

### Step 1

Use the Key (8) to press down on tabs to unlock front cover. Insert four AA sized batteries (**NOT INCLUDED**).

### Step 2

Remove cap from liquid reservoir and fill with your favorite hand sanitizer (**NOT INCLUDED**). Replace cap and close front cover.

### Step 3

Align holes onto pins on Backer Plate (5) and lock in place.

## Storage & Care

Place display parts in Carry Case (included) and store in a cool dry location. Recommended for indoor use only. Machine wash on gentle cycle using mild detergent. Tumble Dry Low Heat. Do NOT dry clean, Do NOT iron.